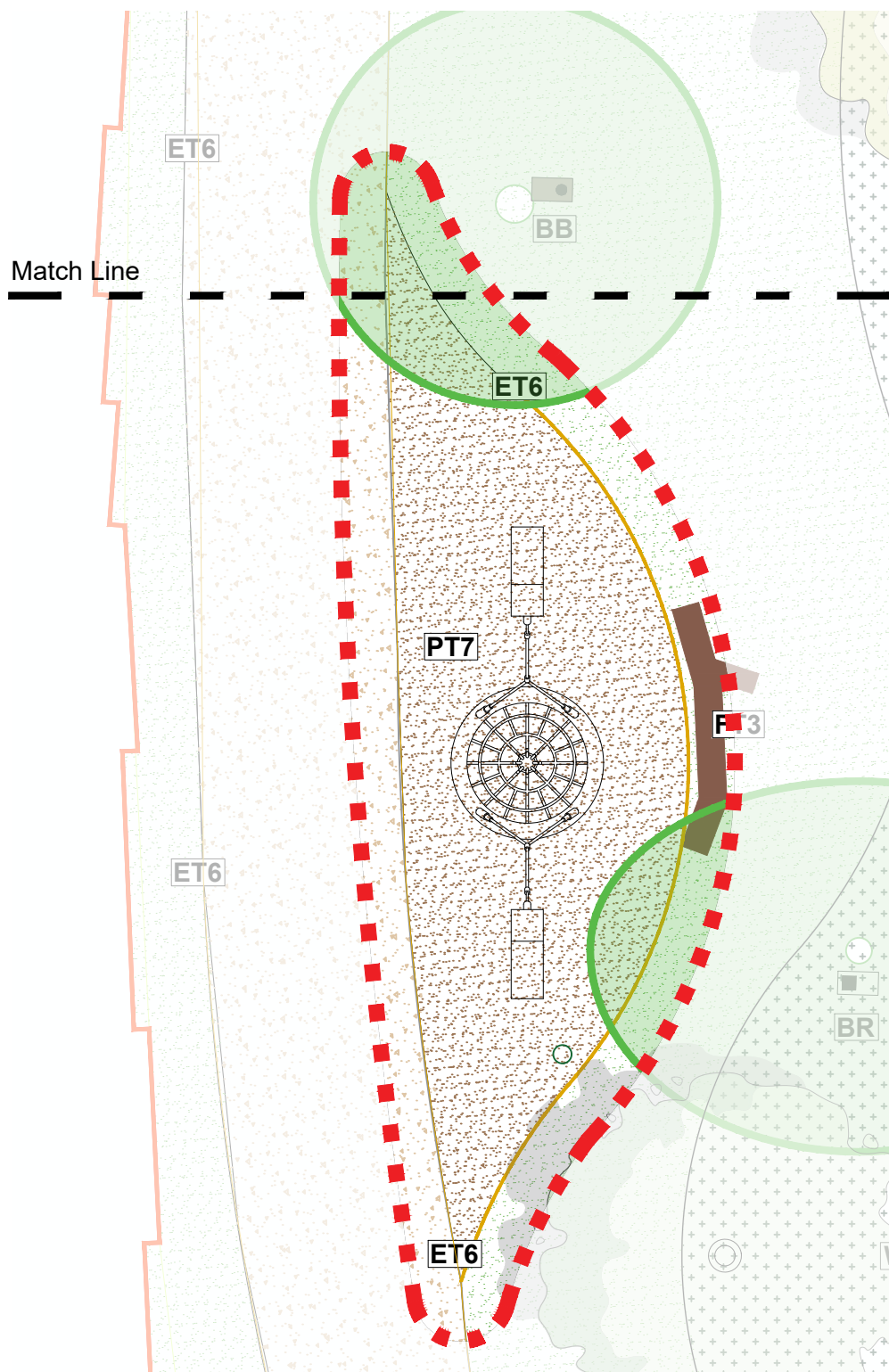


Key Location Plan 1:2000



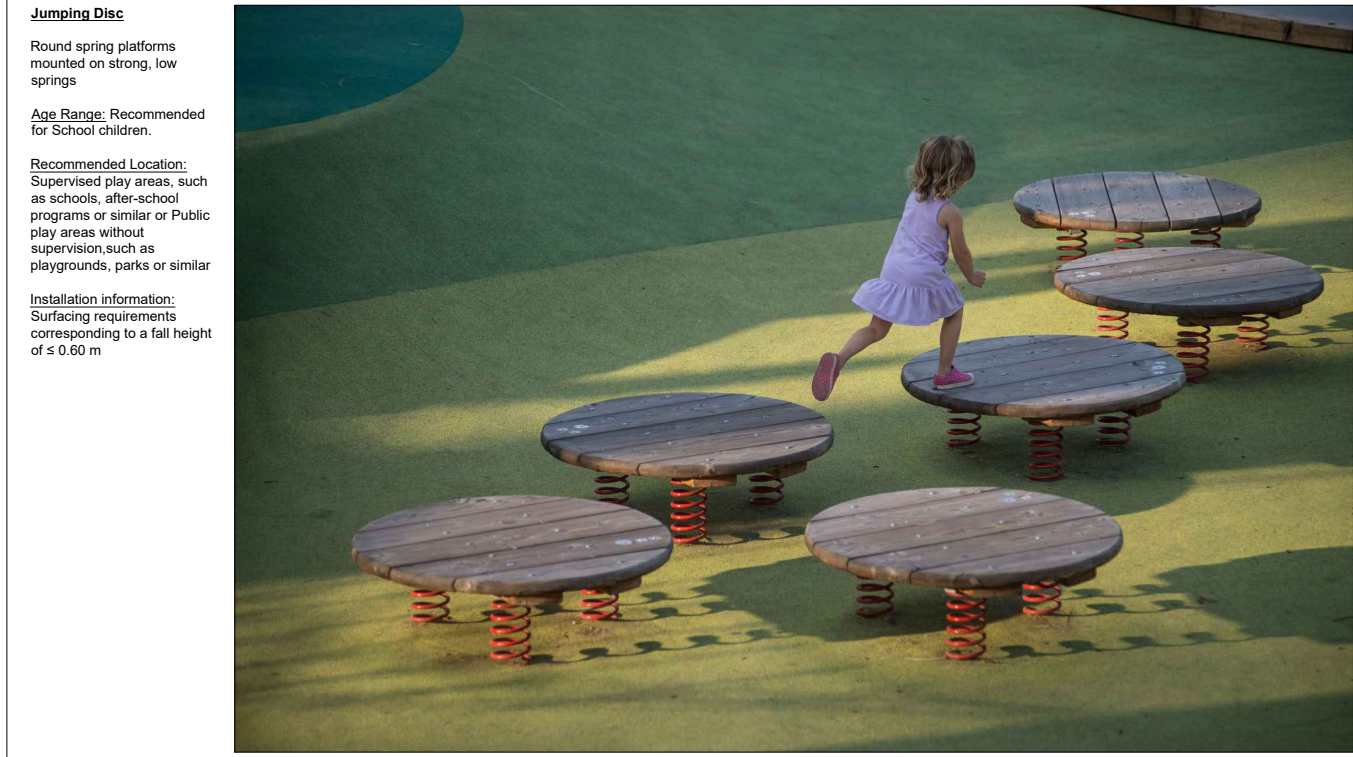
Swing Basket
Often one of the most popular units in the playground, a swing basket consists of two large section hardwood beams, stainless steel fixings and a basket swing. This swing can be used by multiple children at once making it an inclusive option.
Age Range: 2 to 12 years
Installation Information:
Area Required: 7.0m x 3.0m
Critical Fall Height: 1.1m
Safety Surfacing: 14 sqm



Log Climbing Stump
Bespoke log climbing stump with various natural log beams intended for climbing. Development of balance as well as social skills or negotiation and competition.
Age Range: 4+ years
Installation Information:
Bespoke. To be detailed at detailed design stage.
Maximum critical Fall Height: 2.4m



Climbing Net
Bespoke rope net intended for climbing, seating and gathering. Development of balance as well as social conversational skills. Allowing an alternative viewpoint of the woodland, from within the mature tree canopy, and interaction with nature.
Age Range: All ages, from children climbing and playing to teens gathering with friends, or adults nature watching.
Installation Information:
Bespoke. To be detailed at detailed design stage.

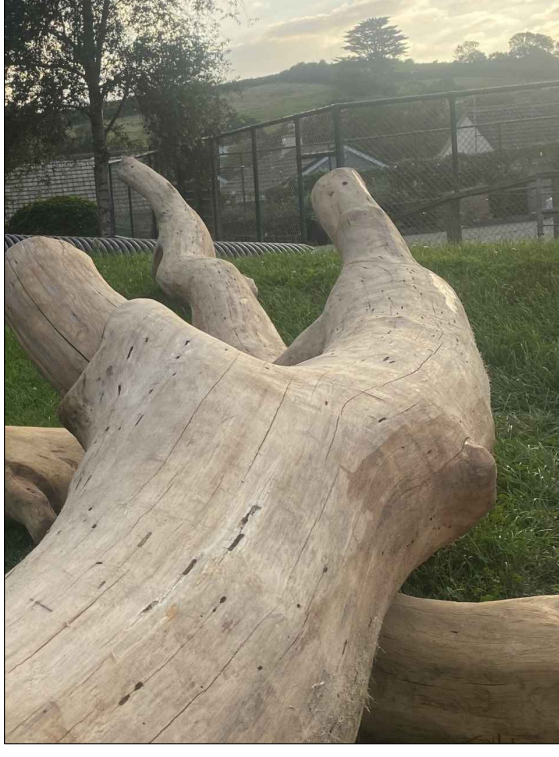


Jumping Discs
Round spring platforms mounted on strong, low springs.
Age Range: Recommended for School children.
Recommended Location: Supervised play area, such as schools, after-school programs or similar or Public play areas without supervision such as playgrounds, parks or similar.
Installation Information:
Surfacing requirements corresponding to a fall height of 0.60 m.

Stepping Stumps
Timber poles out to various sizes and heights, set in a cluster for children to navigate between.
Age Range: 2+ years
Installation Information:
Area Required: 3.0m x 3.0m
Critical Fall Height: 0.6m
Safety Surfacing: 0.0qm



Fallen Log
Fallen Logs make an amazing feature for children to climb, balance, explore and develop their imaginations.
Reclaimed from site or reclaimed timber sourced from play supplier. To be less than 600mm above ground at highest point.
Age Range: All ages, from imaginative play to seating and gathering.
Preparation: Bark removed and all surfaces sanded and oiled, ends pinned where necessary to reduce splitting.
Installation Information:
Surfacing requirements corresponding to a fall height of 0.60 m.



Zoom Plan Focus Area

- KEY**
- PROPOSED PLAY EQUIPMENT**
- Play Equipment Type 1: Jumping Discs**
Supplier: Timberplay or Similar Approved
Size/Material: 1050mm x 1000mm/Mounted Larch
 - Play Equipment Type 2: Existing Fallen Logs (5-11+ yrs)**
Supplier: Reclaim or Similar Approved
Size/Material: Varies based on existing trees/Timber
 - Play Equipment Type 3: Climbing Net**
Supplier: Duncan & Grove or Similar Approved. Size/Material: 19700mm x 4900mm/Robina, Steel Fittings, Wire Reinforced Ropes
 - Play Equipment Type 4: Log Climbing Frame (5-11+ yrs)**
Supplier: Duncan & Grove or Similar Approved
Size/Material: 11000mm x 1000mm/Timber
 - Play Equipment Type 6: Slatted Balance Beam**
Supplier: Duncan & Grove or Similar Approved
Size/Material: 7500mm x 6300mm/Robina, Stainless Steel Fittings
 - Play Equipment Type 8: Stepping Stumps**
Supplier: Duncan & Grove or Similar Approved
Size/Material: Varies/Robina
 - Play Equipment Type 10: Basket Swing (5-11+ yrs)**
Supplier: Duncan & Grove or Similar Approved. Size/Material: 10500mm x 10700mm/Hardwood Beams, Stainless Steel Fittings
 - Play Equipment Type 10: Tree stump climber (5-11+ yrs)**
Supplier: Bespoke Size/Material: H1500mm x D600mm/ Reclaimed Timber

HARD LANDSCAPE

- Paving Type 1: Rezin Bound Gravel**
Size/Colour: 3.6mm/Aggregate
Supplier: Clestone or Similar Approved
- Paving Type 7: Loose Bark Chip**
Size/Colour: 40-60mm/Chip Size/Natural
Supplier: Woodside Garden Products or Similar Approved
- Paving Type 8: Bonded Rubber Mulch**
Size/Colour: Red & Brown. Supplier: Safetyplay Surfacing Ltd or Similar Approved
- Edge Type 6: Timber Edging**
Size/Colour: 30x50x2500/Brown
Supplier: -

- FURNITURE**
- Furniture Type 1: Bench without back, Imperial Bench** Supplier: Bailey Street Scone or Similar Approved. Size/Material: L: 2000mm x D: 340mm x H: 450mm/Timber
 - Furniture Type 3: Reclaimed Wood Bench** Supplier: Bespoke. Size/Material: Varies/Timber
 - Furniture Type 15: Elevated Boardwalks / platforms & railings** Supplier: Boardwalks Bespoke, SVA, Balustrade or Similar approved. Size/Material: Varies / Composite Timber

SOFT LANDSCAPE

- Proposed Semi-mature Clear Stem Tree**
Product: Refer to D&S
Supplier: Van den Berk or Similar Approved
Size: 30-35cm girth, Clear stem 2-2.5m high, RB.
- Proposed Semi-mature Multi-stem Tree**
Product: Refer to D&S
Supplier: Van den Berk or Similar Approved
Size: 5m high, canopy filled by at least 1m, RB.
- Existing Tree**
Refer to Arboicultural Survey and Topographical Survey (Category A/B/C Category C)
- Existing Woodland Understorey**
To be retained and managed as required
- Proposed Long Meadow Mix**
Product: Refer to D&S
Supplier: TBC or Similar Approved